



# Vinyl BALUSTRADE SYSTEM

LIFETIME WARRANTY

# Balustrade System

These unique premium virgin vinyl Balustrade styles offer a bracketed system that is not only easy to install, but is strong and durable.

When installed with round columns the look is timeless.

The 5000 Series is available with turned, recessed, and plain newel posts. The 7000 Series is available with recessed and plain newel posts. Stainless steel post brackets are sold separately. Also available are optional New England Flat caps and the optional classic 1-piece trim.

## L I F E T I M E   W A R R A N T Y



All step sections are custom made (custom straight lengths available).



Step railing sections include sleeve over trim, cut to the angle of your pitch.



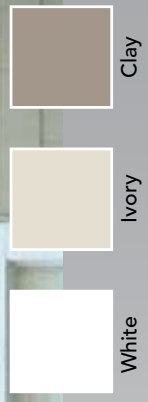
Brackets and adaptors are available for straight, corner, step and 8" and 10" round column post installations.



Curved sections are available in custom radiuses for a distinctive look.

NEW

# Columns



White

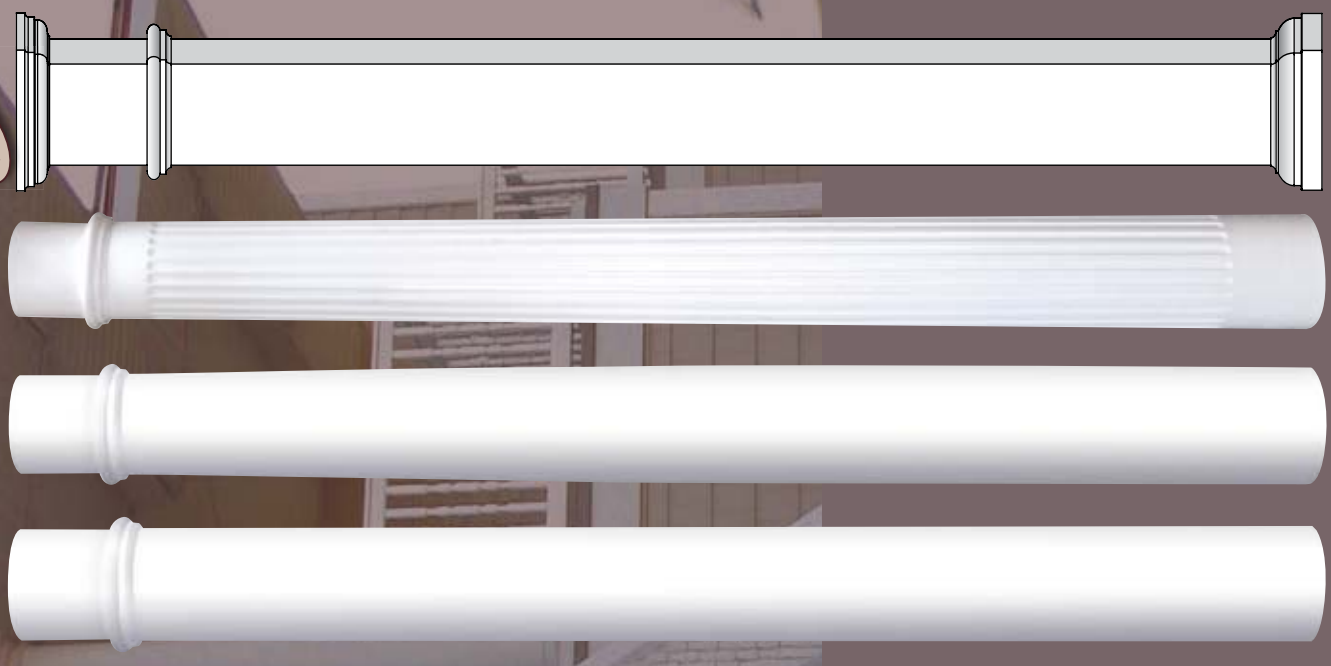
Ivory

Clay

## Structural Columns

**Structural post load: 18,000 lbs. maximum**  
**Uplift: approximately 1,600 lbs.**

- Structural 108" and 120" columns feature a unique plate system with hardware included.
- Posts do not have seam lines.
- 8" and 10" x 10' are available in White, Ivory and Clay.
- 8" and 10" x 9' are available in White only.
- Custom heights available up to 120" for fluted columns only.



8" Straight

8" & 10" Tapered

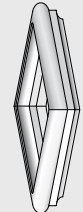
8" Fluted Tapered

8" X 9" Square

### Square Column



Aluminum Bottom Square Column Plate



Top Square Column Trim Ring



Top & Bottom Square Column Trim

### Round Column



Aluminum Top & Bottom Round Column Plates

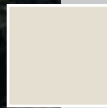


Top & Bottom Round Column Trim

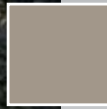
*Vintage*



White



Ivory

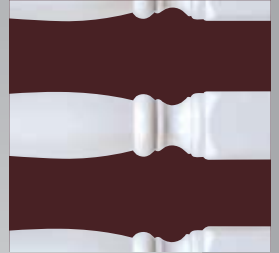


Clay



Top and bottom rails are reinforced with aluminum "A" channel inserts.

## 5000 Series Balustrade



## Brackets

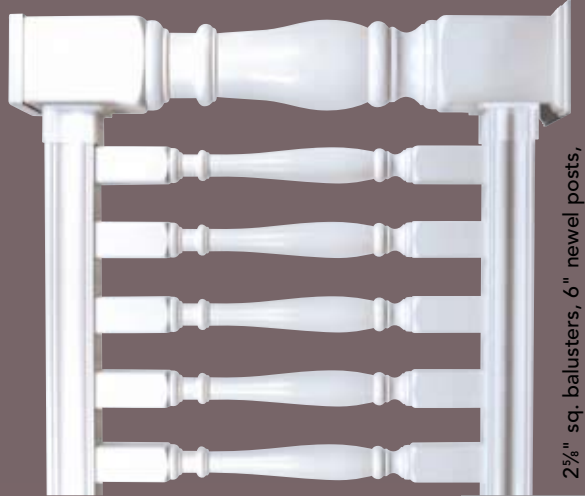


Bracket



45° Adaptor

Round Column Adaptor



2 5/8" sq. balusters, 6" newel posts, 4 1/2" wide x 3 5/8" high top and bottom rails



Step Bracket



Top



Bottom

32° - 36° External Step Bracket

## Balusters



Vintage  
2.5/8" sq.

baluster end profile

Denver  
1.3/4" sq.

## Newel Posts



The 6" newel posts are available in Plain, Recessed Panel and the new Vintage Design. All are available in 38" and 54" heights.



Patented post plates are included with all structural posts.



Stainless Steel Post Mounting Bracket (Turned Newel Post)  
6" x 37" or 43"H



Stainless Steel Post Mounting Bracket (Plain or Recessed Panel Newel Post)  
6" x 37"

## Porch Posts



Vintage  
6" x 108"  
Load: 20,000 lbs.  
Uplift: 1,275 lbs.



Recessed Panel  
6" x 108"  
Load: 20,000 lbs.  
Uplift: 1,275 lbs.

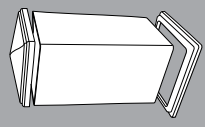


Plain  
6" x 108"  
Load: 20,000 lbs.  
Uplift: 1,275 lbs.



Structural porch posts have extruded aluminum inner posts with spacer bars.

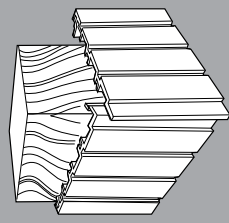
## Covering for Wood Posts



Post Sleeve  
9' or 11' Long  
6" x 6"



8 Piece Post Wrap  
Available in White only  
8" x 8"  
10" x 10"  
12" x 12"  
No Trim available.



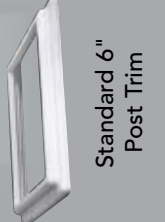
Beachdale Cladding  
8 1/2' or 10 Long  
4" x 4"  
4" x 6"  
6" x 6"  
8" x 8"  
Trim Bracket available.

Superior Systems Balustrade Railing Systems are available with Vintage or Denver balusters.

## Post Caps & Trim



Standard Plain Flat Cap



Standard 6" Post Trim



Optional New England Flat Cap



Optional Federation Post Cap

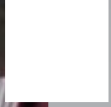


Classic 1-piece Post Trim

# Belmont

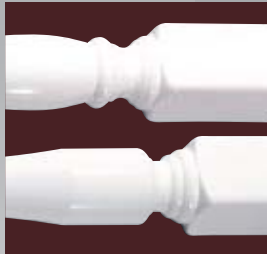


Ivory



White

## 7000 Series Balustrade



With 3 $\frac{3}{4}$ " sq. balusters, 8" newel posts and 6 $\frac{1}{2}$ " wide top and bottom rails, it is perfect for installations requiring larger railing systems.



Top and bottom rails are reinforced with aluminum "A" channel inserts.

## Balusters



Oakmont  
3 3/4" sq.



Belmont  
3 3/4" sq.



Bedford  
2 5/8" sq.

Superior Systems balustrade railing systems are available with optional Belmont, Bedford or Oakmont balusters.

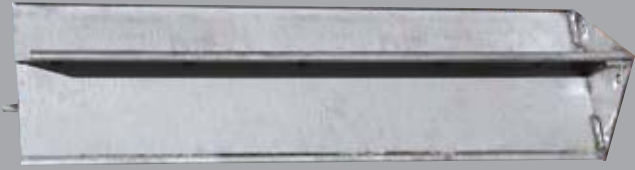
## Newel Posts



8" Plain Panel Post



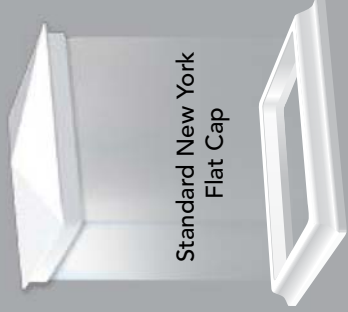
8" Recessed Panel Post



Stainless Steel Brackets  
8" x 26" or 37" H

The 8" newel posts come in two styles, Plain or Recessed Panel, and are available in 38" and 54" heights.

## Post Caps & Trim



Standard New York Flat Cap



Optional New England Flat Cap

Standard 8" Post Trim

Classic 1-piece Post Trim

Newel posts come standard with a New York flat cap (or optional New England flat cap) and Plain 1-piece post trim (or optional Classic 1-piece post trim).

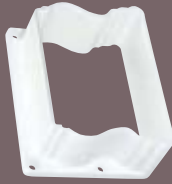
Curved sections available.



## Brackets



6 1/2" Top Bracket



6 1/2" Bottom Bracket



Round Column Adaptor



45° Adaptor



Top Sleeve Over Trim



Bottom Sleeve Over Trim



Step Bracket

For step sections